



SafTran[®] TPM Transport Platform

Simple. Safe. Efficient.

A versatile access solution for
medium-range projects.

SafTran[®]
BY BRAND SAFWAY

Aluma SAFWAY[™]

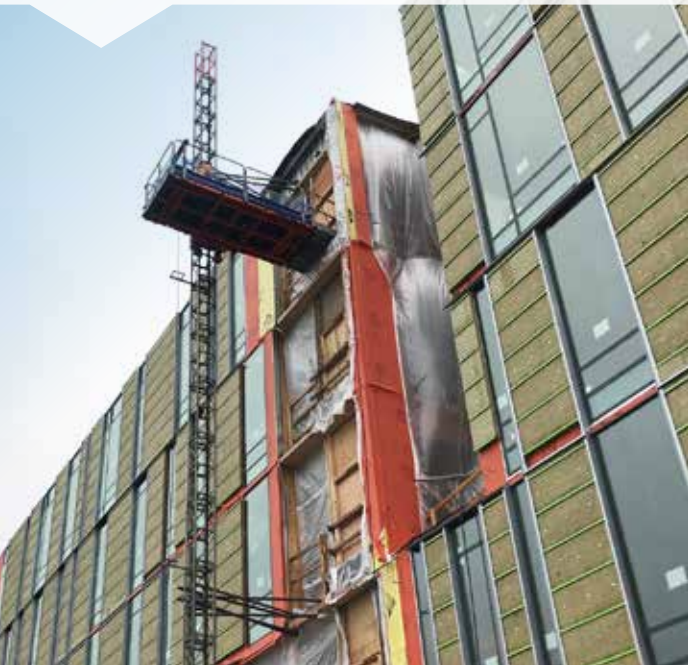
At Work For You[™]

› Efficient, economical and safe alternative to conventional hoists.

Modular design allows for six configurations and exceptional adaptability.



Ideal for contractors who need dedicated vertical site access for their own crews and materials.



Move large loads up to 12 feet in length. Designated operator not required. AVF technology ensures a smoother, quieter ride.

SafTran® TPM Transport Platform Specifications

- › Platform dimensions: 5'3" (W) x 10'6" or 12' (L)
- › Loading height: 1'9"
- › Unit weight: 5,844 lbs.
- › Maximum payload: 2,866 lbs. at 10'6"; 1,500 lbs. at 12'6"
- › Maximum number of people: Five
- › Travel speed: 39 fpm
- › Maximum height: 656'
- › Maximum tie spacing: 36'
- › Drive system: Rack and pinion
- › Motors: Two each – 5.5 hp
- › Power requirements: 480 volt, 3 phase, 35 amp
- › Safety devices: Gravity-activated manual centrifugal brake – 40 fpm and Alimak overspeed safety brake

YOUR LOCAL EXPERT
COMMERCIAL CONSTRUCTION ACCESS SOLUTIONS

+Safety
First and Foremost

+Expertise
Industry-Leading Depth/Range

+Solutions
The Broadest Portfolio

+Productivity
Increased at Every Level

+Local
Management and Labor

Visit AlumaSafway.com
to connect with Your Local Expert.

Aluma SAFWAY™