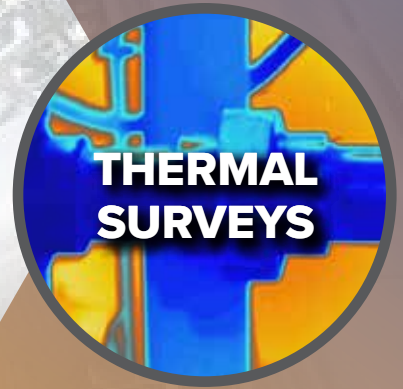


Relevant Experience.
Real Results.



**WINTERIZATION
SERVICES**



Winterize now for cold weather protection

- › Protect your facility, equipment and pipelines from the elements
- › 25+ years of proven winterization experience
- › Trained and certified expertise to keep your site running optimally
- › Turnkey solutions, maintenance programs, outages, and audits

Services Include:



Heat Tracing

Design, engineer, procure and construct capabilities



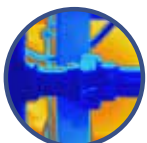
Heat Tracing Audits

Robust programs and analysis for assessing and prioritizing repairs



Insulation Services

Proven product and execution expertise



Thermal Surveys

Thermal imaging/analysis for optimizing process systems



Asbestos Abatement

Licensed full-service abatement capabilities and competent personnel



Rope Access

Safe, efficient access with trained multi-craft personnel

› Highlighted Projects

Turnkey Winterization Project in Texas *Finished 1 month ahead of schedule*

Services delivered: abatement, heat tracing, insulation and scaffolding.

- › 135,000 feet of heater cable
- › 80,000 feet of conduit
- › 250 instrument enclosures
- › 67 transformers and panels

Turnkey Winterization Plant Upgrade

Services delivered: EHT audit, heat trace system upgrades and improved power distribution plan.

- › Replaced 5 panels to smart technology and connected them to DCS room for rapid failure visibility
- › Inspected and labeled 1000+ circuits for operational integrity
- › Upgraded system for consistent flow, to ensure performance reliability and predictability

- › Additional services include winterization and scaffold shelters, fireproofing and coatings

AlumaSafway provides access and industrial service solutions with turnkey installation, engineering support and safety training.

› Ready to Deliver

+Safety
First and Foremost

+Expertise
Industry-Leading Depth/Range

+Solutions
The Broadest Portfolio

+Productivity
Increased at Every Level

+Local
Management and Labour

AlumaSafway, Inc.
304-69 Avenue NW
Edmonton, AB T6P 0C1
780 440 1692

©2021 All rights reserved. ASL 3314

Aluma > **SAFWAY**[™]

For more information, visit www.alumasafway.com