

Unlimited Reach

Scaffolding and Work Access Solutions

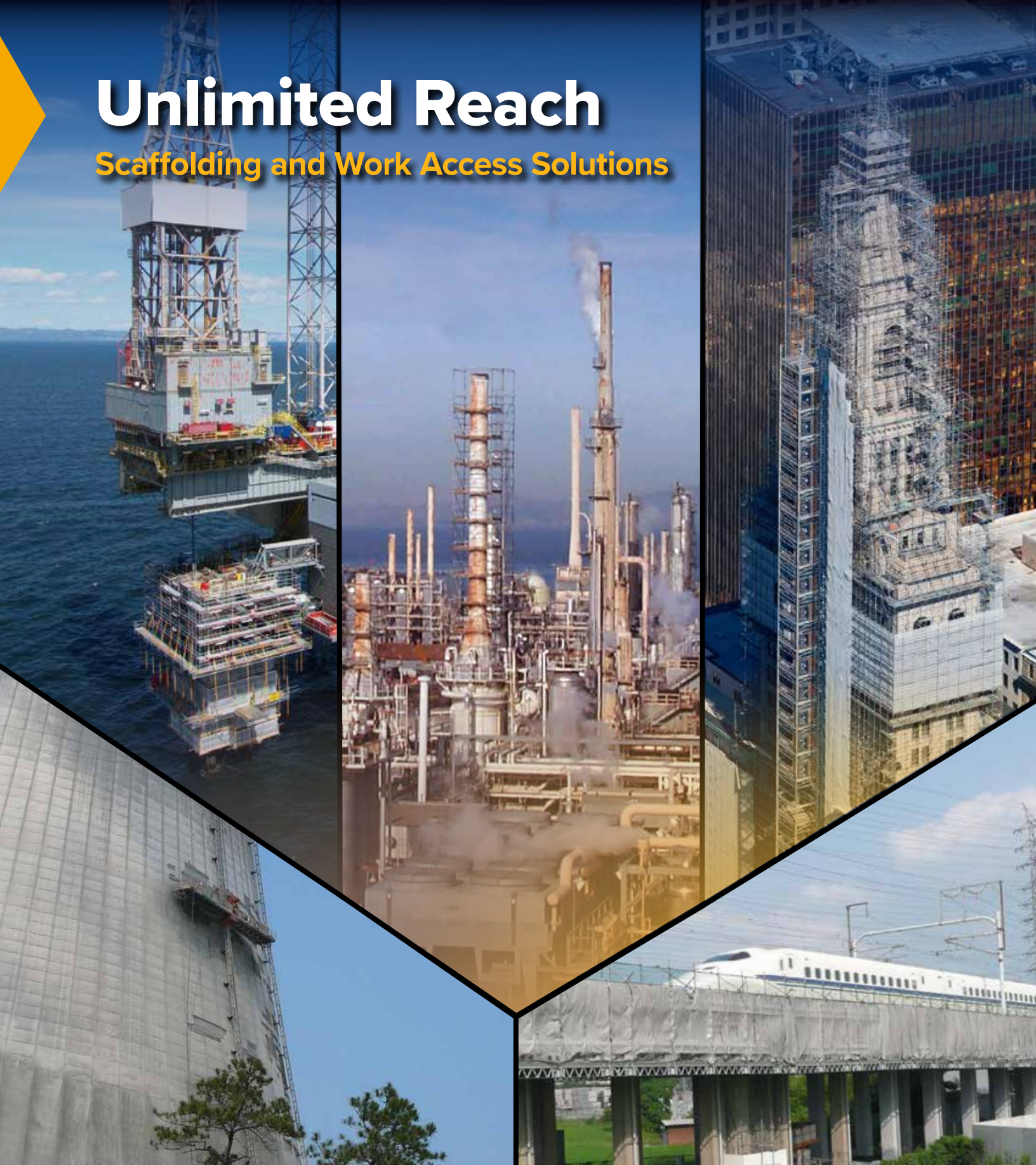


Table of Contents

| | |
|--|----|
| Largest Inventory, Local Management and More Solutions | 1 |
| Environmental Health & Safety (EHS) | 2 |
| BrandlNet® | 3 |
| SafLock System Scaffold® | 4 |
| Tube & Clamp Scaffold | 5 |
| SafMax® Frame System | 5 |
| Sectional Scaffold | 6 |
| Rope Access | 7 |
| HAKI® Protection and Mobile/Stationary Platforms | 8 |
| QuikDeck® Suspended Access System | 9 |
| QuikShield® Suspended Access System | 9 |
| Spider® Powered Suspended Access Solutions | 10 |
| Motorized Solutions | 11 |
| Forming and Shoring | 12 |
| Experience Serving Your Market | 13 |
| And That's Just the Beginning | 14 |

With a commitment to safety as its foremost value, AlumaSafway provides the broadest range of services, products and solutions, with the greatest depth of expertise, to the industrial, commercial and infrastructure markets throughout Canada. AlumaSafway was created by bringing together the top two access, insulation and coatings companies – Aluma Systems Industrial Services and Safway Services Canada – in 2018. With its rigorous operating processes and extensive service offerings, AlumaSafway supports customers’ maintenance, renovation and new construction projects. AlumaSafway is a part of BrandSafway, a portfolio company of Clayton, Dubilier & Rice. For more information, visit www.AlumaSafway.com.



Largest Inventory, Local Management and More Solutions

› Wherever you need to go, we can get you there.



With locally managed locations all across Canada, AlumaSafway is ready to serve you by providing the highest performance and the best customer service in the market. We have the widest array of products – available for purchase or rental – and the largest access and scaffold equipment inventory in the industry.

In addition, our ability to offer customers flexible contract options (work activity norms/unit-based and performance/incentive-based), instead of just time and materials or lump-sum estimates, has been key to helping us provide the highest level of service. This also means that we're prepared to share in the risk with our customers to keep down costs and increase the profitability of any project.

From delivery and installation through management and dismantle, you can rely on AlumaSafway to increase site safety and productivity with the best products and services available. Whether your project is large or small, we want to be your access and industrial service provider.

Environmental Health & Safety (EHS) Our Number One Value



› At AlumaSafway, we believe safety drives efficiency and productivity.

At AlumaSafway, Environmental Health and Safety (EHS) is our number one value. We believe we owe it to anyone working with, in and around our products and services to maintain and continuously improve our safety performance – setting the standard in our industry.

Our commitment to EHS starts at the top with our executive leadership team and cascades throughout our organization to include our entire network of branches, locations and jobsites. Ownership, personal responsibility and the importance of following policies and procedures are consistently communicated across our company. Our leadership team believes that ALL accidents can be prevented and that ALL of our employees are responsible for EHS.

We are committed to developing a culture where environmental health and safety are core values, adopted and practiced throughout all levels of the organization. Developing an

effective safety program is like building a sturdy structure; it begins with a stable foundation. At AlumaSafway, our solid base is our Five Pillars of Safety:

- › Employee Intervention System
- › SOS: Supervisor Observation System
- › Management Safety Reviews
- › Gold Link Audit System
- › BrandSafway Learning Network

These are the strong and stable foundation on which we've built our outstanding safety performance and culture, and they effectively drive our strategic safety initiatives globally.

With these core values as the focus of our industry-leading safety culture and our award-winning safety record, AlumaSafway is more than a company with a great safety program; AlumaSafway is a safe company.

BrandNet®

For Improved Engineering, Estimating, Planning and Execution

› Our industry-leading program for access optimization.

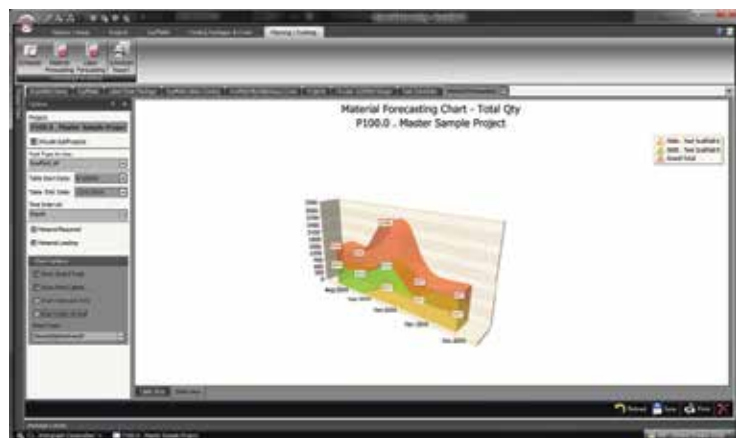
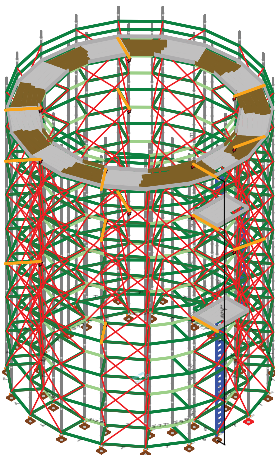
Advanced engineering and optimized access are keys to increasing safety, as well as saving time and money. BrandNet, our proprietary software application, utilizes AlumaSafway's years of access and scaffold experience and our expertise in engineering to help you increase productivity and lower your total installed cost.

BrandNet's core service offerings cover key access management functions, including:

- › 3D design
- › Estimating
- › Planning and scheduling
- › Materials management
- › Project management
- › Project controls
- › Geolocation support
- › Customized reporting

BrandNet, together with our team of engineers – the largest and most experienced in the industry – deliver a return on your investment through:

- › Improved project baselines
- › Advanced scaffold design for safety, reusability and reduced modifications
- › Better materials management
- › Enhanced visual work packages for field execution



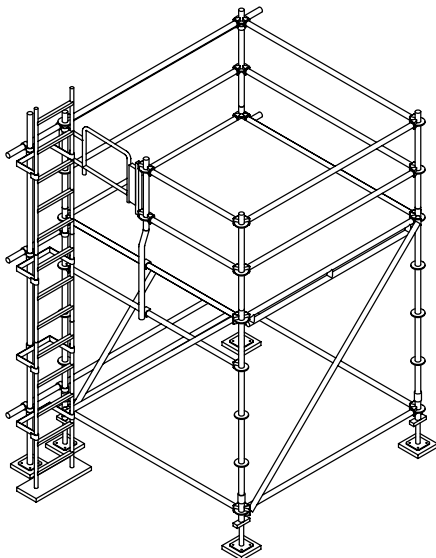
SafLock System Scaffold®



› For any project, large or small.

SafLock System Scaffold is a flexible access system that allows workers to erect a rigid platform virtually anywhere. The scaffold's uniquely engineered components lock securely into the rosette, and each rosette can hold up to eight connections. There are no loose fittings such as nuts, bolts or clamps. Like our other products, SafLock System Scaffold is fast and easy to assemble, and parts can fit through an 18-inch opening. The scaffold also has compatible connections to other AlumaSafway products, like Tube & Clamp Scaffold, for convenience and greater jobsite flexibility.

SafLock System Scaffold is a perfect choice for all your scaffold applications. Complimented by innovative accessories such as our hatch deck, safety gates, steel planks and toeboards as well as various sizes of fixed and adjustable sidebrackets, this system will get you where you want to go.





Tube & Clamp Scaffold

› Dodge obstacles – even in congested or restricted areas.

Tube & Clamp Scaffold enables access to 99% of applications in congested or restricted areas. Used as a supplemental or independent scaffold structure, it can fit any shape, height or width.

Easy to erect and dismantle, Tube & Clamp's design has only three basic parts. Rigid and swivel dual-purpose clamps fasten with integral bolts and nuts to 1.90-inch outer diameter (OD) galvanized steel tubes, which are coupled together with twist-lock fittings. The same clamps can also fasten to Sectional frames, which have 1.69-inch OD tubing.



SafMax[®] Frame System

› Ideal for surface work

SafMax is user friendly and ideal for surface work. Requiring no inside cross-braces, SafMax gives workers full access to work surfaces for EIFS (Exterior Insulation and Finish Systems) or masonry applications. A large walk-through area (6 feet and 6 inches tall) allows more headroom. An internal ladder and hatch design allows easy access to all work levels. Fully planked, flush platforms also mean fewer tripping hazards. Platforms are three planks wide, increasing the work area. Ladder width is 25 percent wider than competitive systems.





Sectional Scaffold

> The one that started it all.

Sectional Scaffold provides flexibility and access. A wide variety of Sectional Frames are available to suit your project needs, including: Narrow Section, Walk-Through, Mason, and Integral Prefabricated Access Frames with a built-in ladder.

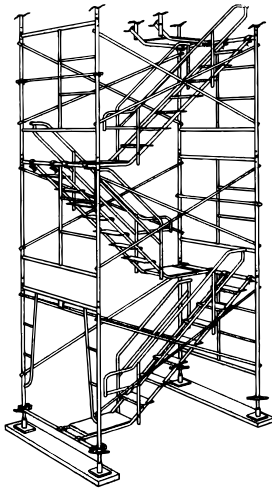
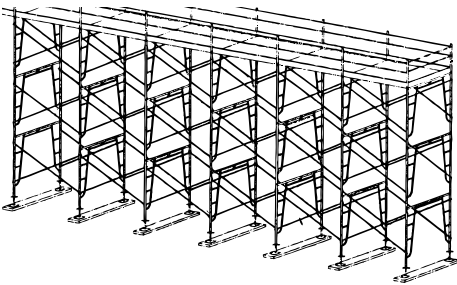
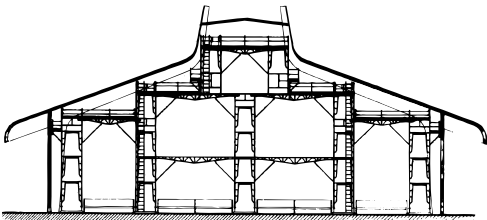
Height adjustments are made quickly and efficiently due to deeply rolled acme threads that minimize jamming from sand and dirt on the job.

Different lengths of lightweight aluminum platform planks offer versatility. Putlogs provide a method to span obstacles or door openings and create additional platform space.

The Rolling Tower Base Frame increases the base width of the tower without the need for extra components.

Stairways provide an efficient means to transport personnel and equipment. Practical, functional and easy-to-use side brackets, ladders and guardrails are also available.

Sidewalk canopy frames are used to provide covered pedestrian passage while construction is in progress.





Rope Access

› Dodge obstacles – even in congested or restricted areas.

AlumaSafway’s specialized rope access teams provide the means to reach high elevations and otherwise inaccessible locations in a safe, proven and cost-effective way. Our rope access services can work as an independent solution, be used in combination with conventional access methods or complement a comprehensive and integrated multiservice plan. And as a member of the International Industrial Rope Access Trade Association (IRATA), with zero recordable incidents and over 100,000 hours on rope, you can be assured that safety is always first and foremost throughout every project.



› Applications

- › Standby rescue
- › Insulation
- › Fireproofing
- › Coatings/Painting
- › Mechanical services
- › Refractory
- › NDT
- › Netting installations
- › Other specialty services

› Advantages

- › Reduced equipment and labor costs
- › Shorter setup and dismantle time
- › Smaller jobsite footprint
- › Decreased exposure hours

HAKI® Protection and Mobile or Stationary Platforms



› **Span large areas, protect assets and equipment and ensure safety and productivity.**

HAKITEC® 750 –

Temporary roofs, shelters and buildings

When you need to protect assets, equipment and structures or create a barrier from the weather, HAKI temporary roof systems, buildings and shelters provide the ideal solution. Safe, quick and easy to erect using modular components, the HAKITEC 750 can be designed to cover large, wide, uninterrupted spans and fit almost any shape and size, including pitched and polygonal structures.

HAKISPAN 750 –

Mobile or stationary platforms

When you need to span large areas – especially immense, wide spaces above facilities that need to remain open and in use – the HAKISPAN 750 mobile or stationary platforms provide the perfect solution. Lightweight aluminum trusses provide great strength in relation to weight, and modular components make assembly and installation quick, easy and above all, safe.

Applications include: commercial construction and refurbishment – from airports and churches to theatres and leisure facilities – as well as industrial jobsites, storage, warehousing, and shipbuilding or repair.

BrandSafway is the primary distributor of HAKI products throughout North America.



QuikDeck® Suspended Access System

QuikDeck®
BY BRAND SAFWAY

Engineered to increase efficiency, QuikDeck can be assembled from just a few basic components and configured to fit almost any shape or size. Built in the air or on the ground and hoisted into position, QuikDeck can be leapfrogged and relocated as work progresses to reduce equipment costs. Providing factory-floor-like working conditions, your crew, along with multiple craftspeople can work quickly and safely side by side. All structural steel components are hot-dipped galvanized to maintain a full load rating and long service life. In addition each component can be easily handled by one person and requires no special tools or skills to assemble.

Depending on configuration and suspender spacing, load capacities can range from 25 pounds per square foot (psf) to more than 75 psf. QuikDeck applications include: bridges, offshore, shipyards, atriums, temporary stages, boilers and separation vessels.



QuikShield® Suspended Access System

QuikShield®
BY BRAND SAFWAY

Our newest, suspended access system is especially well suited for large or long-term projects, providing an ideal rental solution. Offering easy assembly – with no specialized tools or labor – QuikShield provides a flat, non-slip deck surface for easy visual inspection and optimal material handling, a significant factor in improving safety. Plywood decking in galvanized steel frames is lightweight, replaceable and stacks for easy shipping. Flat, slip-resistant decking minimizes slips, trips and falls and makes it easier to remove grit and keep surface clean from debris. Dual, galvanized, seven-sixteenths wire rope provides redundant suspension, and when coupled with three-eighths inch galvanized and powder-coated chain, tendon failure is deterred. Rigid, adjustable-height guardrails increase security.





Spider® Powered Suspended Access Solutions



› More than 70 years of experience and unparalleled expertise

The clear leader in powered suspended access solutions, Spider by BrandSafway manufactures and distributes suspended access and fall protection solutions in North America. Spider solutions include:

- › Traction and drum material hoists,
- › Work cages and baskets,
- › Modular work platforms,
- › Rigging equipment and supplies, and
- › Fall protection equipment.

Founded in 1947, Spider created the power suspended access business by introducing the Spider basket. Since then, Spider product and service offerings have expanded to serve the needs of an ever-growing marketplace. Spider provides rental options or permanent installations, specialty engineered products, safety and training, and a team of outstanding professionals within a network of sales, customer service and technical support.



Safety is Spider's number one core value, which has played a crucial role in the brand's success and longevity. Spider invests in ISO 9001:2015 and OHSAS 18001:2015 certifications, Underwriters Laboratory listings and Standard Work Instructions to ensure customers receive the safest solutions in the industry. Spider also offers OSHA-approved training programs for customers as well as their own technicians to equip users with the tools and knowledge necessary to operate safely at height.

Motorized Solutions

› When you need a lift, we can get your project off the ground.

Personnel Hoists

Designed for high-rise applications, our SafCar Personnel Hoists provide lifting speeds up to 298 feet per minute and can transport as much as 8,000 pounds (to enable movement of crews and materials) vertically. We can offer a variety of configurations (including dual car capability on one fixed mast); counterweighted and non-counterweighted designs; Variable Frequency Drives (VFD); and wide-opening gates to ease the handling of large, heavy objects.



Transport Platforms

Ideal for structures up to 150-foot high, SafTran Transport Platforms enable the movement of authorized personnel/crews and material, with lifting speeds of 40 feet per minute. A variety of configurations and wide-opening gates ease the handling of large, heavy material. Available in single- and double-mast installations. Designated operator not required.



Mast Climbers

For all building façade work, AlumaSafway's combustion or electric-powered mast climbers deliver dependable, high-performance, vertical access. Modular design can be configured to efficiently position crews, materials and tools and provides access to all work surfaces. Lifting speeds up to 39 feet per minute ensure timely vertical access to heights up to 550 feet with lifting capability of up to 10,000 pounds. A unique controlled descent safety feature and turnkey installation services are available.



Forming and Shoring



› Aluma Systems delivers for all your forming and shoring needs.

Aluma Systems, a BrandSafway company, offers a broad range of concrete forming and shoring. With more than four decades of infrastructure services experience in more than 50 countries, Aluma Systems has revolutionized on-site productivity (38 percent improvement) and optimized concrete pour cycles (40 percent cycle reduction), delivering high-efficiency concrete forming and shoring solutions to projects ranging from hotels and stadiums to airports and power plants. Aluma Systems solutions include:

Wall Formwork

Whatever you need to form, from tanks, basements and bridge piers to high-rise commercial or apartment buildings, Aluma Systems offers the ideal wall formwork solution. From large areas to curved walls, and with or without a crane, Aluma Systems can help you develop a safe and efficient solution for your concrete forming project.

Slab Formwork

Our wide range of reliable and efficient slab formwork systems are available for rental or sale. Depending on your jobsite's requirements, you can choose from our panel or traditional slab formwork systems.

Climbing Formwork

Aluma Systems' climbing formwork systems include self climbing, rail guided and jump

climbing. Purposely designed to construct high-rise concrete cores, our climbing formwork systems can also be used to construct internal and external walls. We offer simple crane-dependent systems such as Jumpform, as well as basic rail climbing system (RCS) solutions. Alternatively, we offer self-climbing formwork (SCF) systems, which are rail guided and use hydraulics to lift to the next pour level.

Shoring Solutions

Aluma Systems offers safe and efficient shoring systems, including our highly versatile frame and flying systems, as well as post shore and beam systems. Available for rental or sale, our shoring solutions are characterized by their high stability and ease of erection.

Edge Protection

Let Aluma Systems help you keep your site safe and secure. Aluma Systems provides advice, products and solutions so you can fully comply with the latest guidelines, health and safety regulations and policies on your jobsite. We offer leading edge protection, fall protection, fall prevention, safety screens, scaffolding and staircase systems — all from a single supplier and ideal for concrete, steel frame, brick and timber construction.

Experience Serving Your Market



› **Scaffolding and work access needs vary from market to market, and AlumaSafway can help you determine what will be best for your unique project.**

Our involvement with multiple projects across every market means you'll have the support of AlumaSafway's extensive knowledge and experience. Our industry expertise is part of the package!

Petrochemical and Refining

The petrochemical and refining industry requires tough solutions – and AlumaSafway is up to the challenge from turnarounds, to emergency work and routine maintenance.

Offshore

Our extensive offshore experience allows AlumaSafway to provide simple, safe solutions with open suspended platforms, heavy-duty hoists and lifts, and even traditional scaffold.

Commercial

With our experience, we can help you develop the optimum solution for your restoration, new construction or general maintenance project.

Civil and Infrastructure

AlumaSafway provides complete ground-based and suspended access solutions for infrastructure maintenance, inspection or repair – from bridges to stadiums and transportation hubs.

Power

Our experience in the power industry includes: outages, emergency work, routine maintenance and boiler shutdowns.

Nuclear

Combined with our attention to detail and wide range of specialized support, AlumaSafway products are a reliable, safe choice for your nuclear project.

Specialty Applications

The versatility of our products allows us to extend our services to movie sets, sports arenas and complexes, stages and other special events.

› And That's Just the Beginning

In addition to best-in-class access and scaffold solutions, AlumaSafway provides the widest range of services and proprietary solutions in the industry. These include:

- › Abrasive blasting
- › Cathodic protection services
- › Coatings services
- › Corrosion prevention
- › CUI management services
- › Fireproofing services
- › Insulation services
- › Local skilled labor and project management
- › Refractory services
- › Rope access
- › Safety programs and training
- › Specialty mechanical services – hot tapping, bolt tensioning, field machining, weld testing/fusion and leak detection/repair

AlumaSafway offers the broadest range of industrial services and proprietary solutions.

› Ready to Deliver

+Safety
First and Foremost

+Expertise
Industry-Leading Depth/Range

+Solutions
The Broadest Portfolio

+Productivity
Increased at Every Level

+Local
Management and Labor

AlumaSafway
304 69 Avenue NW
Edmonton, AB T6P 0C1
Toll free: 780 440 1692

©2018 All rights reserved. ASL 960

Aluma › **SAFWAY**[™]

For more information, visit www.AlumaSafway.com