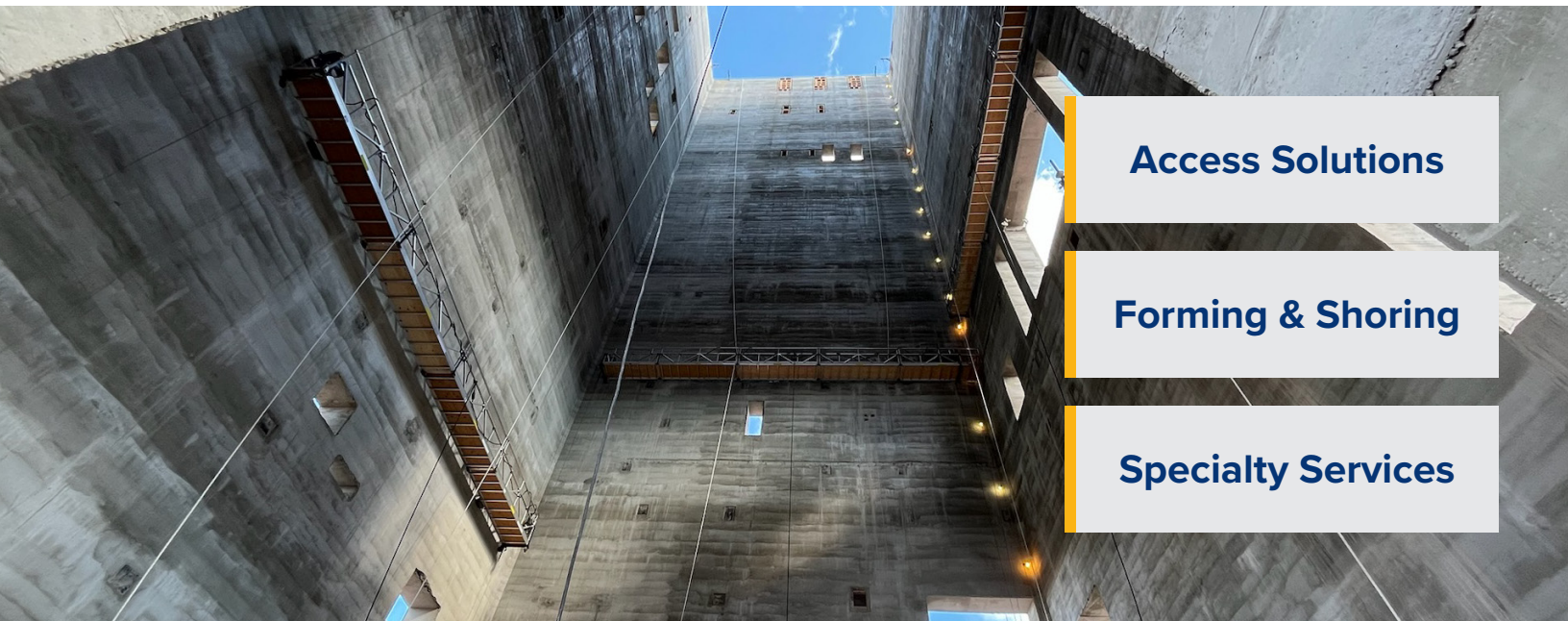


YOUR MINING INDUSTRIAL ADVANTAGE

AlumaSafway is your Top Specialty Contractor for Every Phase of the Project Life Cycle.

With a commitment to safety as its foremost value, AlumaSafway delivers a full range of scaffolding and work access, forming and shoring, computerized stud welding, specialty coatings, fireproofing, and advanced digital planning, with unmatched service from an expert, MSHA certified workforce and a broad, global branch network.

Safely achieve speed, quality and cost efficiency with an all-in-one provider



Access Solutions

Forming & Shoring

Specialty Services

Achieve speed, quality and cost-efficiency with the all-in-one premier provider

BrandTech® Precision Welding

- › Computer-driven stud welding system
- › Up to an 81% reduction in labor
- › Compatible with tungsten carbide wear studs
- › Dramatically reduces equipment downtime

Specialty Coatings

- › Abrasive blasting
- › Surface preparation
- › NACE-trained and -certified inspectors
- › Asset management
- › Corrosion under insulation (CUI) programs

Fireproofing

- › Full range of applications and installation methods
- › Corrosion under fireproofing (CUF) management

Motorized Access

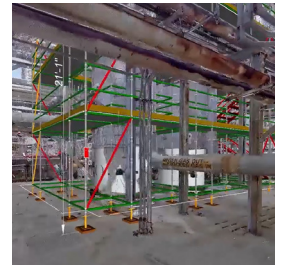
- › Mast climbers, elevators and hoists
- › Suspended motorized access
- › Transport platforms
- › Custom high-capacity motorized solutions

QuikDeck® Suspended Access System

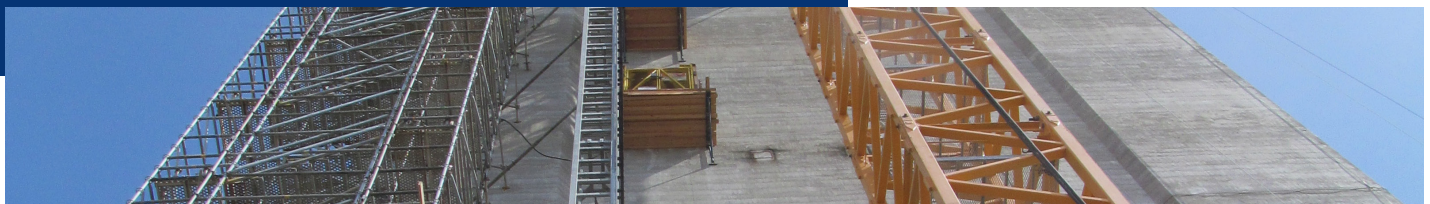
- › Provides factory-floor-like working conditions in the air
- › Allows activity to continue uninterrupted below
- › High load capacities

BrandNet®

- › 3D design and estimating
- › Project management and controls
- › Online scheduling and reporting



▶ **AlumaSafway is your top specialty contractor for every phase of the project life cycle.**



Aluma > SAFWAY™

AlumaSafway
304 - 69 Avenue NW
Edmonton, AB T6P 0C1

780-440-1320
AlumaSafway.com